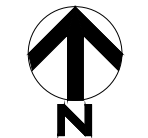




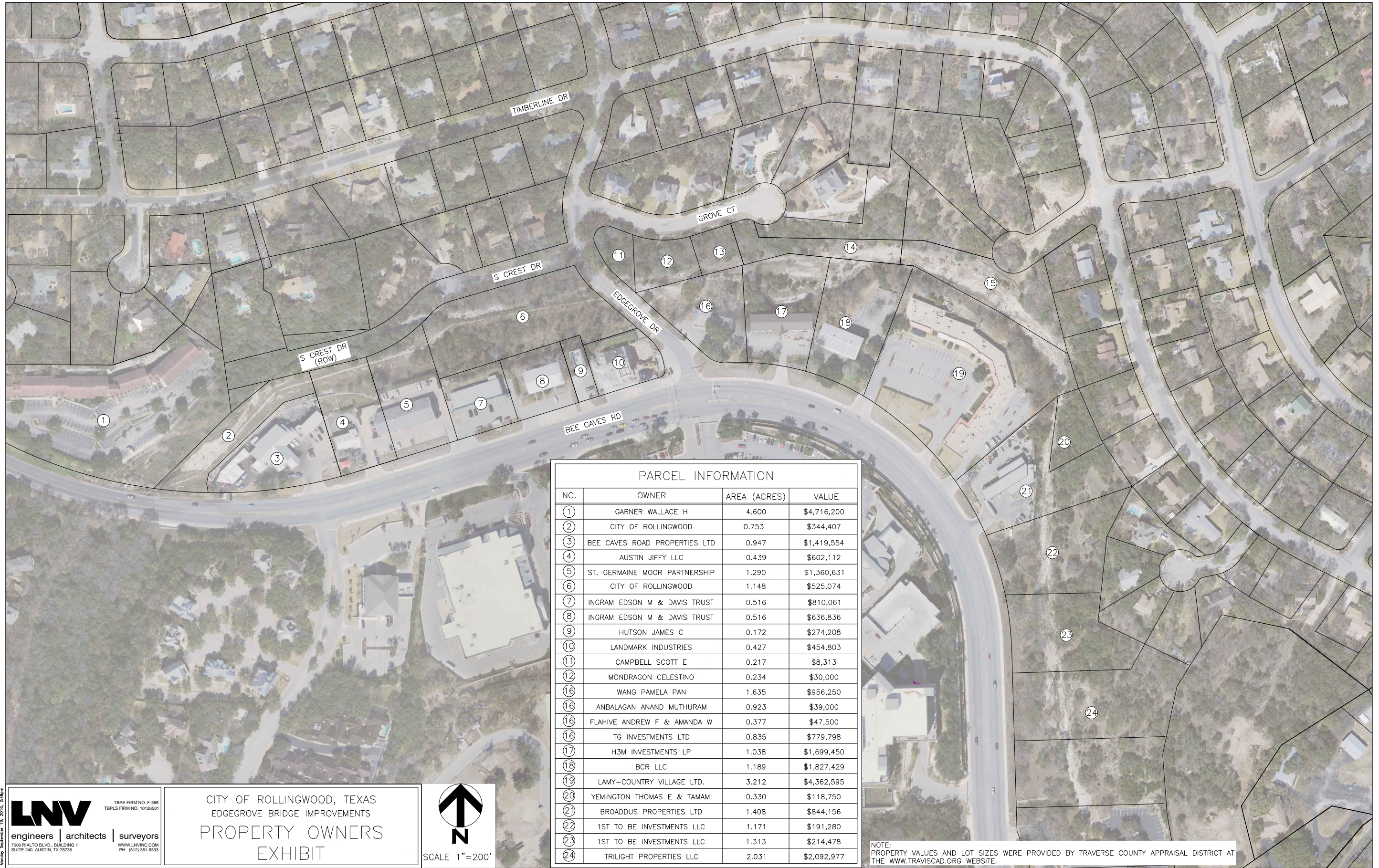
N:\Rollingwood\150438_Edge_RIP_and_Hydraulic_Analy\000_Drawings\From\CA\Edgegrove_Survey_Exhibit.dwg
 Monday, September 13, 2016 2:44pm

LNV
 engineers | architects | surveyors
 7500 REALTO BLVD., BUILDING 1
 SUITE 240, AUSTIN, TX 78735
 WWW.LNVINC.COM
 PH: (512) 381-8333

CITY OF ROLLINGWOOD, TEXAS
 EDGEGROVE BRIDGE IMPROVEMENTS
 SURVEY EXHIBIT



SCALE 1"=200'



PARCEL INFORMATION			
NO.	OWNER	AREA (ACRES)	VALUE
①	GARNER WALLACE H	4.600	\$4,716,200
②	CITY OF ROLLINGWOOD	0.753	\$344,407
③	BEE CAVES ROAD PROPERTIES LTD	0.947	\$1,419,554
④	AUSTIN JIFFY LLC	0.439	\$602,112
⑤	ST. GERMAINE MOOR PARTNERSHIP	1.290	\$1,360,631
⑥	CITY OF ROLLINGWOOD	1.148	\$525,074
⑦	INGRAM EDSON M & DAVIS TRUST	0.516	\$810,061
⑧	INGRAM EDSON M & DAVIS TRUST	0.516	\$636,836
⑨	HUTSON JAMES C	0.172	\$274,208
⑩	LANDMARK INDUSTRIES	0.427	\$454,803
⑪	CAMPBELL SCOTT E	0.217	\$8,313
⑫	MONDRAGON CELESTINO	0.234	\$30,000
⑬	WANG PAMELA PAN	1.635	\$956,250
⑭	ANBALAGAN ANAND MUTHURAM	0.923	\$39,000
⑮	FLAHIVE ANDREW F & AMANDA W	0.377	\$47,500
⑯	TG INVESTMENTS LTD	0.835	\$779,798
⑰	H3M INVESTMENTS LP	1.038	\$1,699,450
⑱	BCR LLC	1.189	\$1,827,429
⑲	LAMY-COUNTRY VILLAGE LTD.	3.212	\$4,362,595
⑳	YEMINGTON THOMAS E & TAMAMI	0.330	\$118,750
㉑	BROADDUS PROPERTIES LTD	1.408	\$844,156
㉒	1ST TO BE INVESTMENTS LLC	1.171	\$191,280
㉓	1ST TO BE INVESTMENTS LLC	1.313	\$214,478
㉔	TRILIGHT PROPERTIES LLC	2.031	\$2,092,977

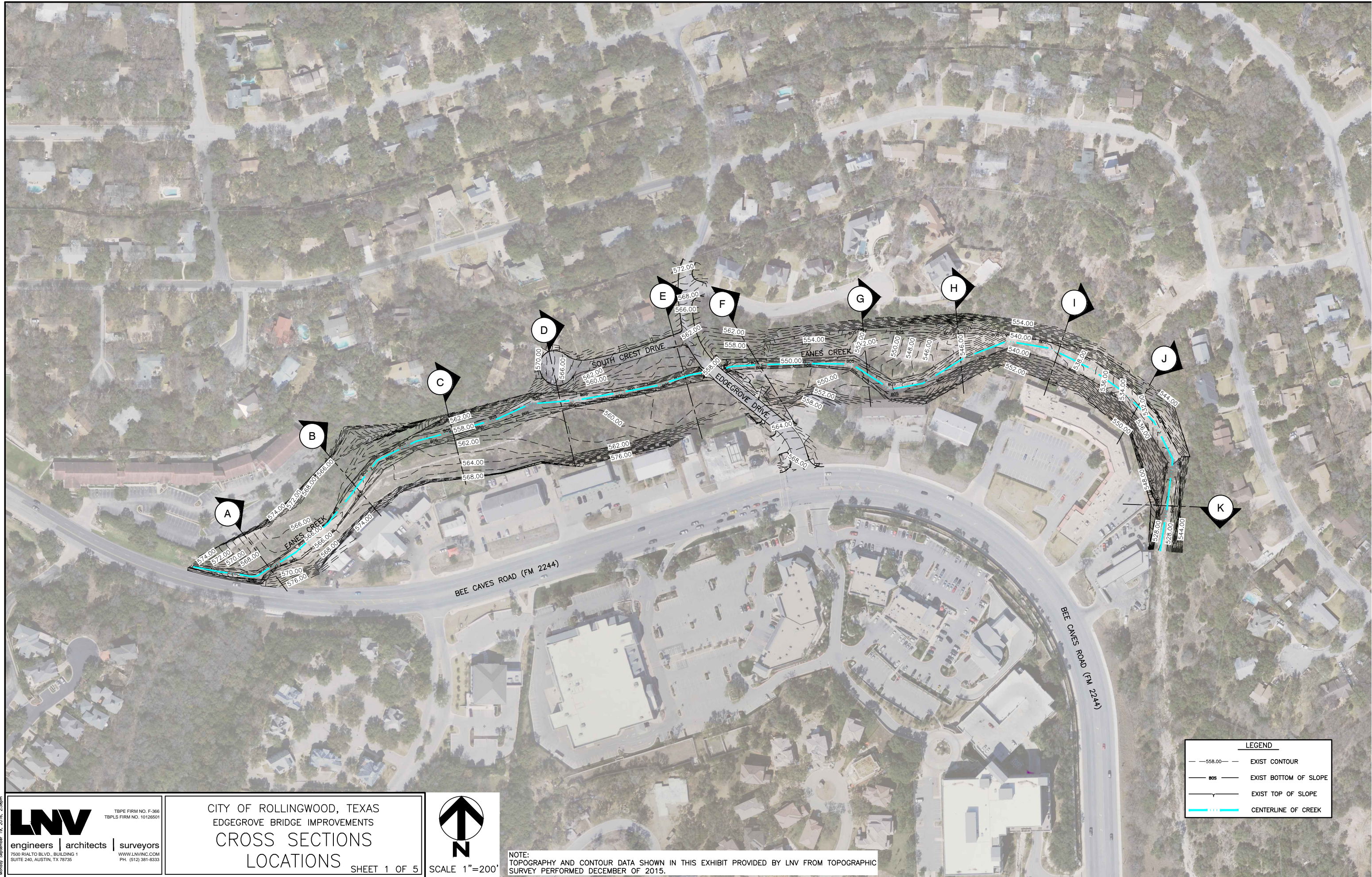
NOTE: PROPERTY VALUES AND LOT SIZES WERE PROVIDED BY TRAVERSE COUNTY APPRAISAL DISTRICT AT THE WWW.TRAVISCAD.ORG WEBSITE.

LNV Engineers, Architects & Surveyors, Inc. is an Equal Opportunity Employer. All rights reserved. © 2018. All rights reserved.

LNV
 engineers | architects | surveyors
 7500 RIALTO BLVD., BUILDING 1
 SUITE 240, AUSTIN, TX 78735
 WWW.LNVINC.COM
 PH. (512) 381-6333

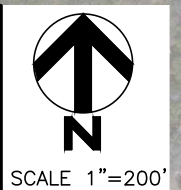
CITY OF ROLLINGWOOD, TEXAS
 EDGEGROVE BRIDGE IMPROVEMENTS
PROPERTY OWNERS
EXHIBIT

SCALE 1"=200'



LEGEND	
	EXIST CONTOUR
	EXIST BOTTOM OF SLOPE
	EXIST TOP OF SLOPE
	CENTERLINE OF CREEK

CITY OF ROLLINGWOOD, TEXAS
 EDGEGROVE BRIDGE IMPROVEMENTS
 CROSS SECTIONS
 LOCATIONS
 SHEET 1 OF 5



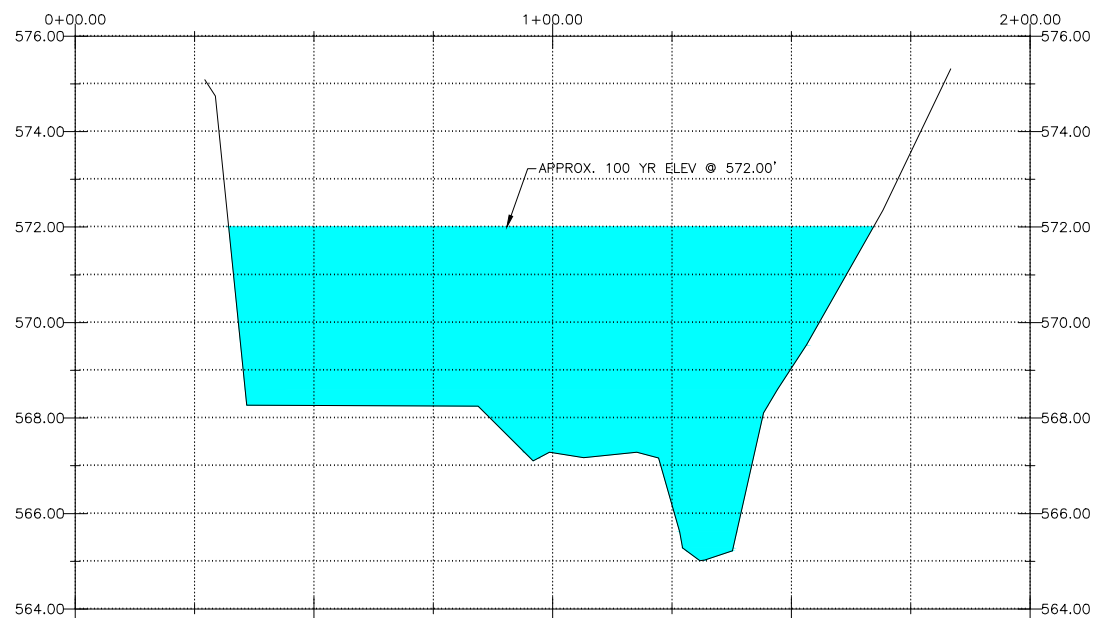
NOTE: TOPOGRAPHY AND CONTOUR DATA SHOWN IN THIS EXHIBIT PROVIDED BY LNV FROM TOPOGRAPHIC SURVEY PERFORMED DECEMBER OF 2015.

LNV
 engineers | architects | surveyors
 7500 RIALTO BLVD., BUILDING 1
 SUITE 240, AUSTIN, TX 78735
 WWW.LNVINC.COM
 PH. (512) 381-8333

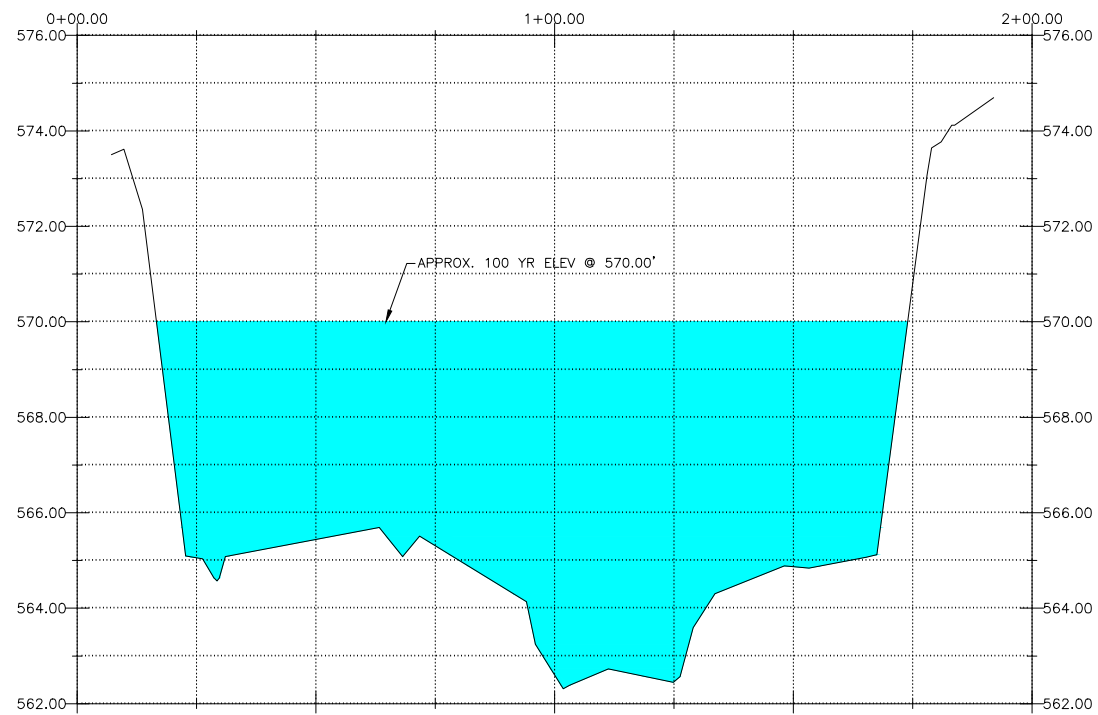
TXBPE FIRM NO. F-398
 TXPLS FIRM NO. 10126501

Monday, September 19, 2016, 2:35pm

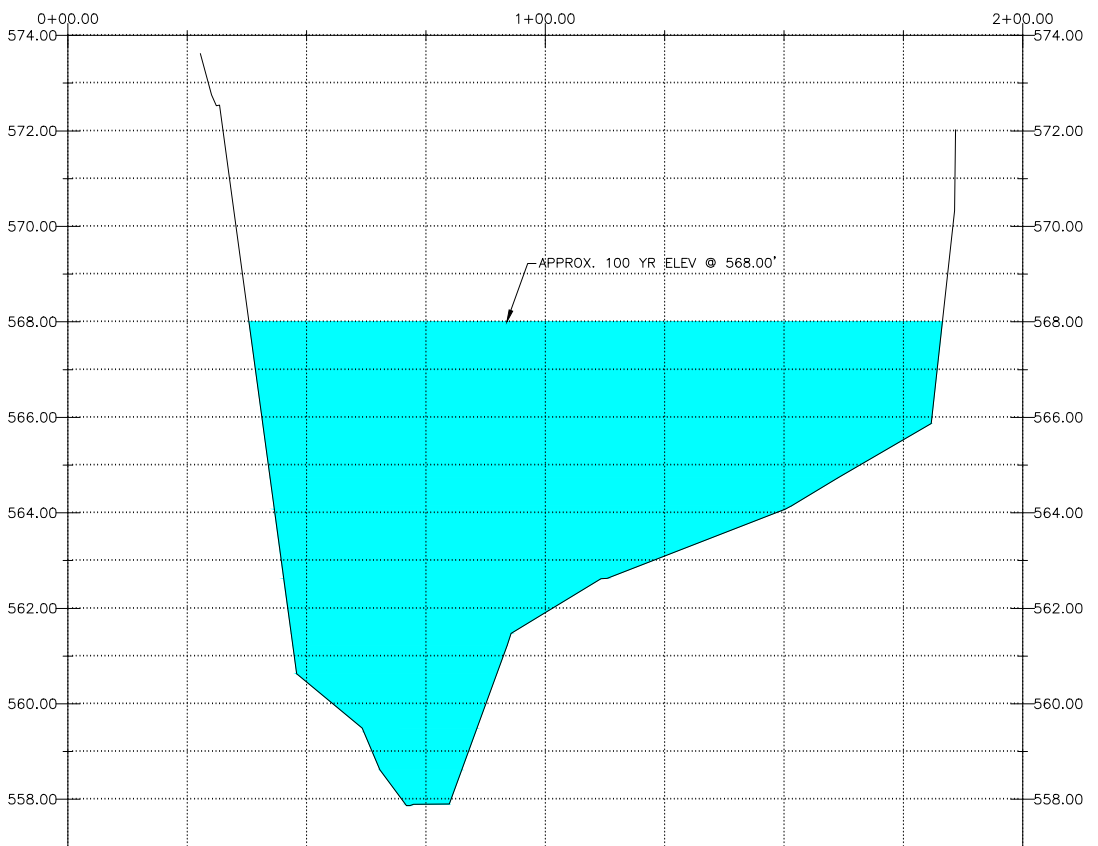
N:\Rollingwood\150435 Bridge PER and Hydraulic Analys\000\Drawings\Plans\Civil\Edgegrove Survey Exhibit.dwg
 Monday September 19, 2016, 2:40pm



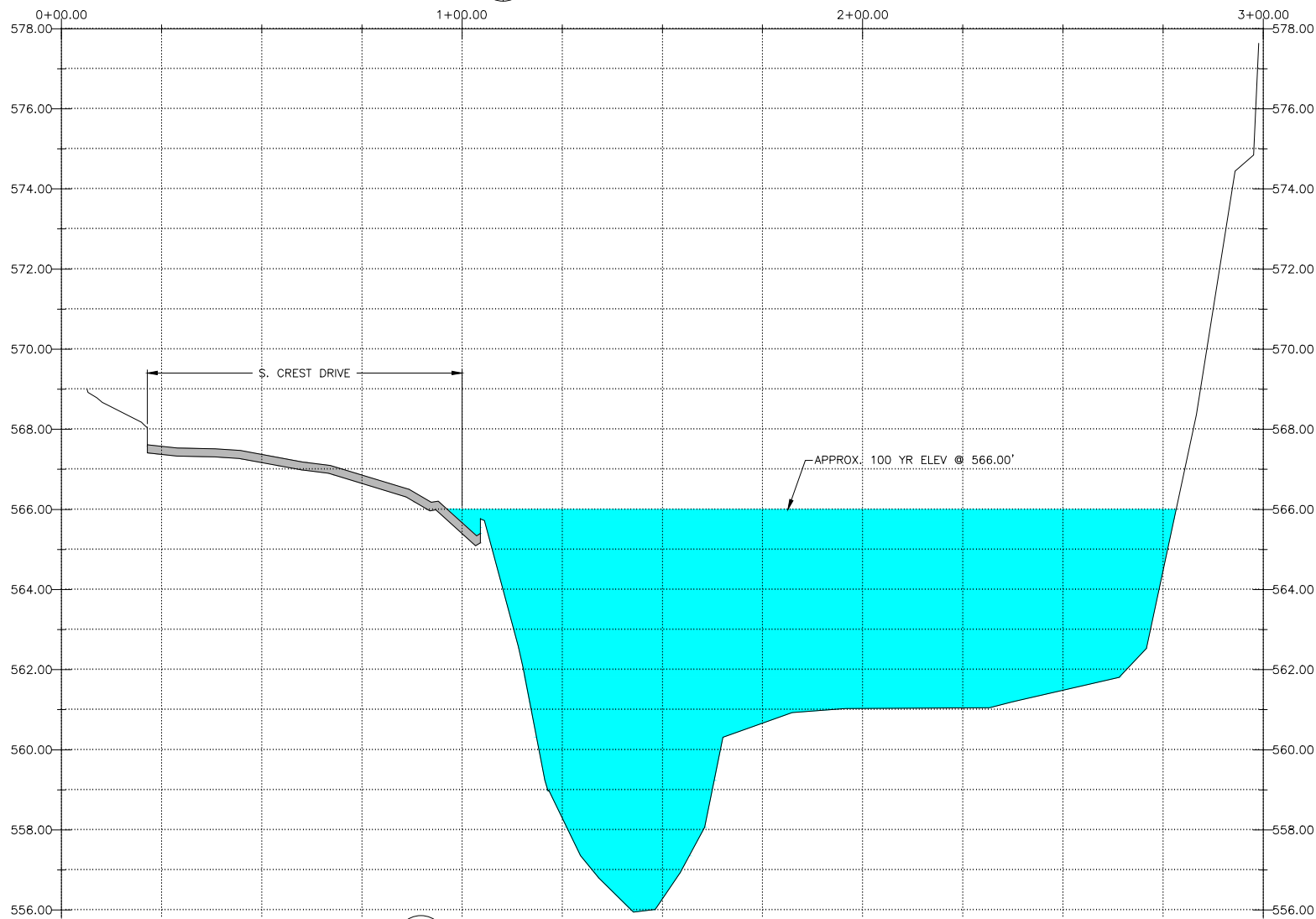
A SECTION A
 SCALE: HORIZ: 1"=40' VERT: 1"=4' (HALF SIZE SHEETS)



B SECTION B
 SCALE: HORIZ: 1"=40' VERT: 1"=4' (HALF SIZE SHEETS)



C SECTION C
 SCALE: HORIZ: 1"=40' VERT: 1"=4' (HALF SIZE SHEETS)



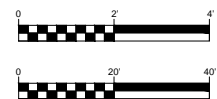
D SECTION D
 SCALE: HORIZ: 1"=40' VERT: 1"=4' (HALF SIZE SHEETS)

LNV
 engineers | architects | surveyors
 7500 RIALTO BLVD., BUILDING 1
 SUITE 240, AUSTIN, TX 78735
 TBPE FIRM NO. F-366
 TBPLS FIRM NO. 10126501
 WWW.LNVINC.COM
 PH. (512) 381-8333

CITY OF ROLLINGWOOD, TEXAS
 EDGEGROVE BRIDGE IMPROVEMENTS

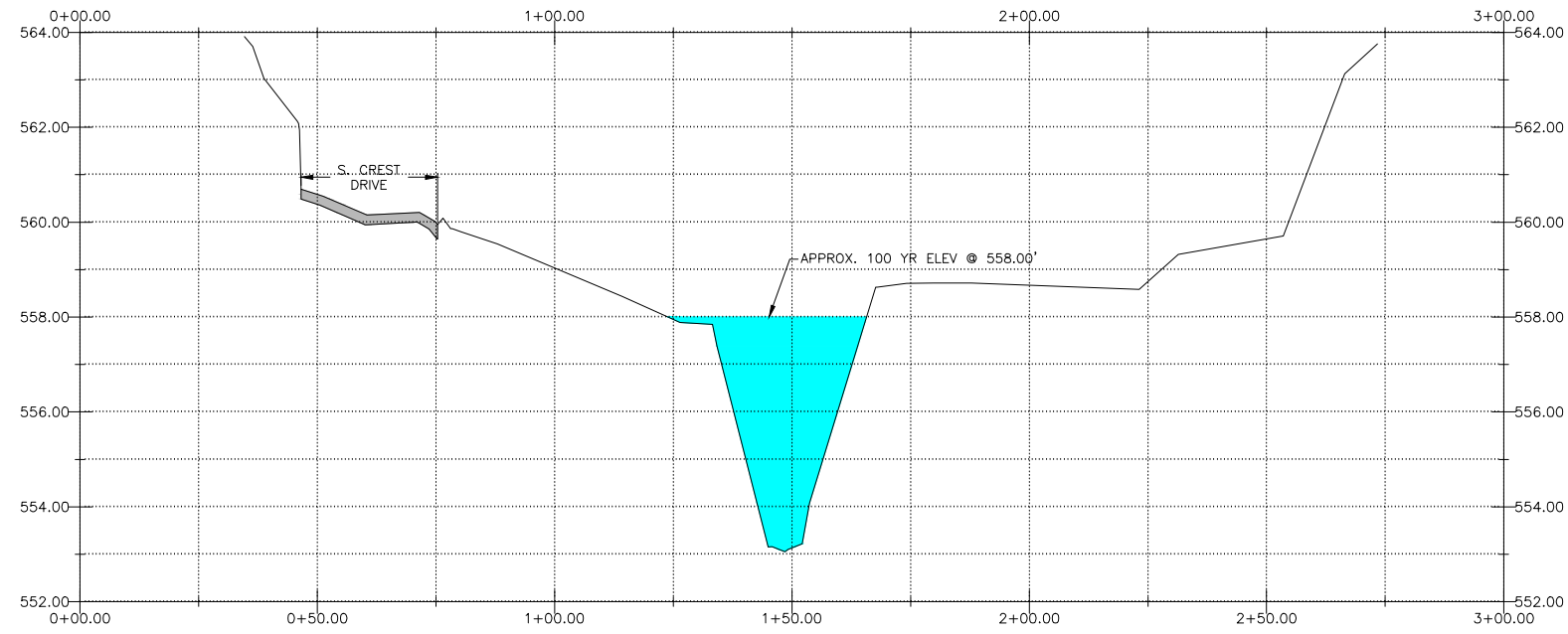
SECTIONS A THRU D

SHEET 2 OF 5

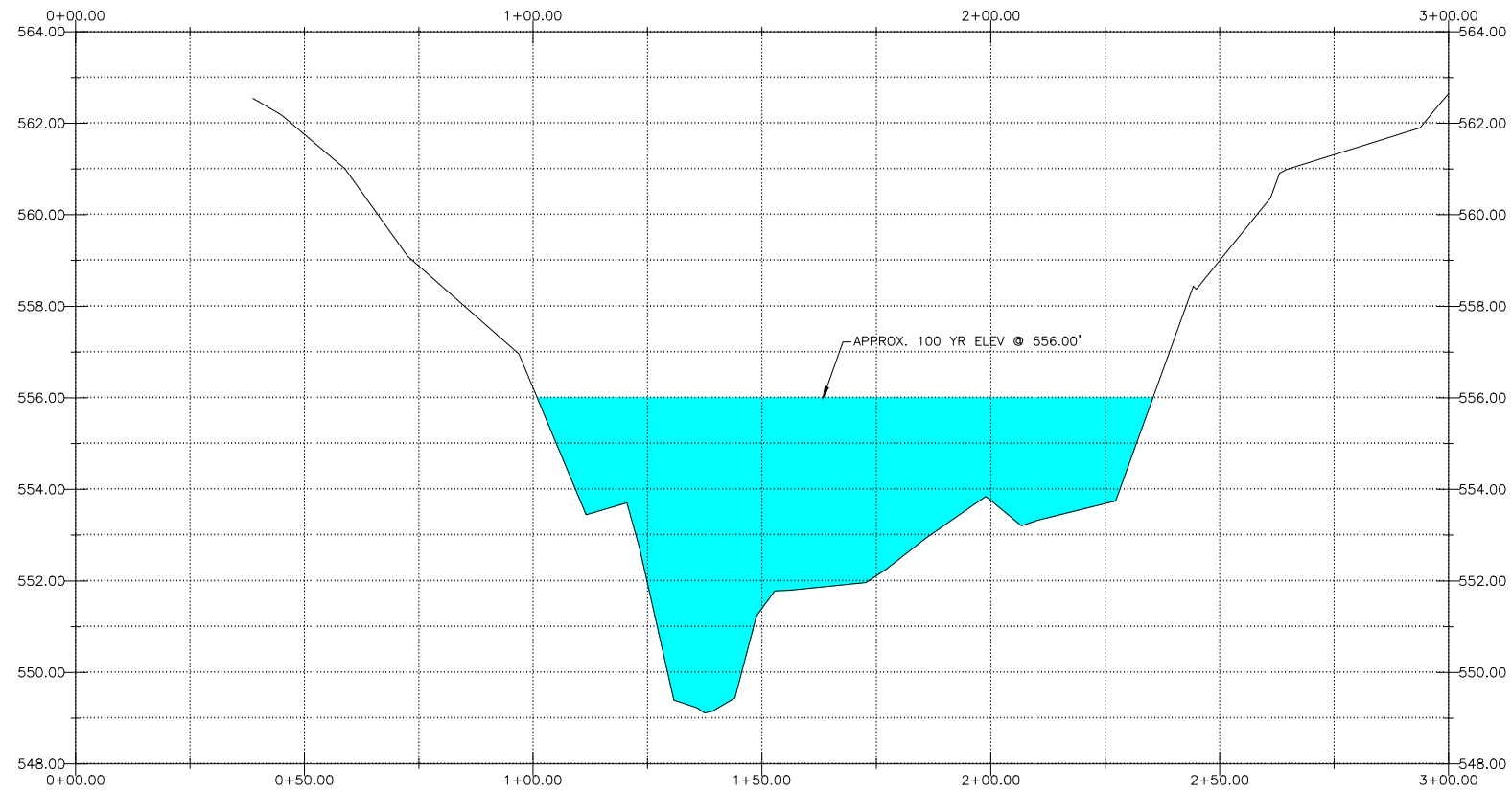


NOTE:
 100 YR FLOODPLAIN ELEVATIONS ARE APPROXIMATE AND WERE
 TAKEN FROM FEMA-NATIONAL FLOOD INSURANCE PROGRAM.

N:\Rollingwood\150435 Bridge PER and Hydraulic Analys\000\Drawings\Plans\Civil\Edgegrove Survey Exhibit.dwg
 Monday September 19, 2016, 2:39pm



E SECTION E
 SCALE: HORIZ: 1"=40' VERT: 1"=4' (HALF SIZE SHEETS)



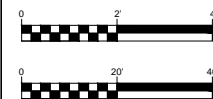
F SECTION F
 SCALE: HORIZ: 1"=40' VERT: 1"=4' (HALF SIZE SHEETS)

LNV
 engineers | architects | surveyors
 7500 RIALTO BLVD., BUILDING 1
 SUITE 240, AUSTIN, TX 78735
 WWW.LNVINC.COM
 PH. (512) 381-8333

CITY OF ROLLINGWOOD, TEXAS
 EDGEGROVE BRIDGE IMPROVEMENTS

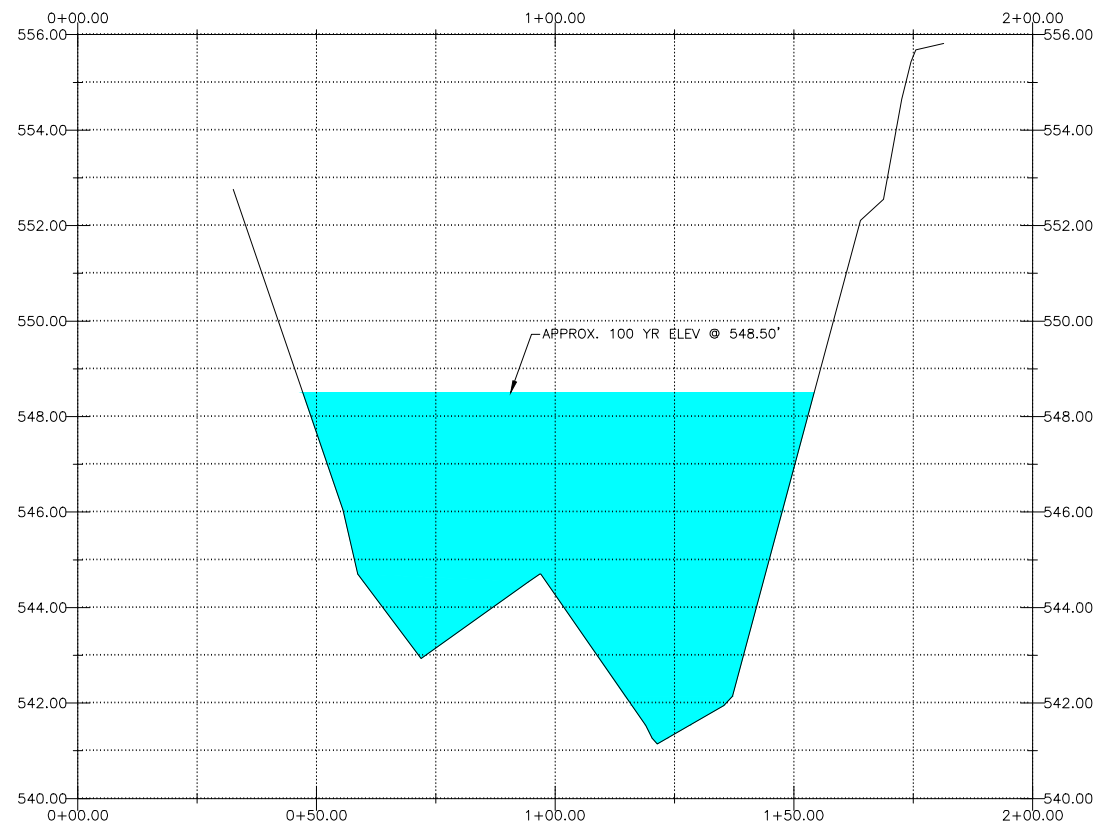
SECTIONS E & F

SHEET 3 OF 5

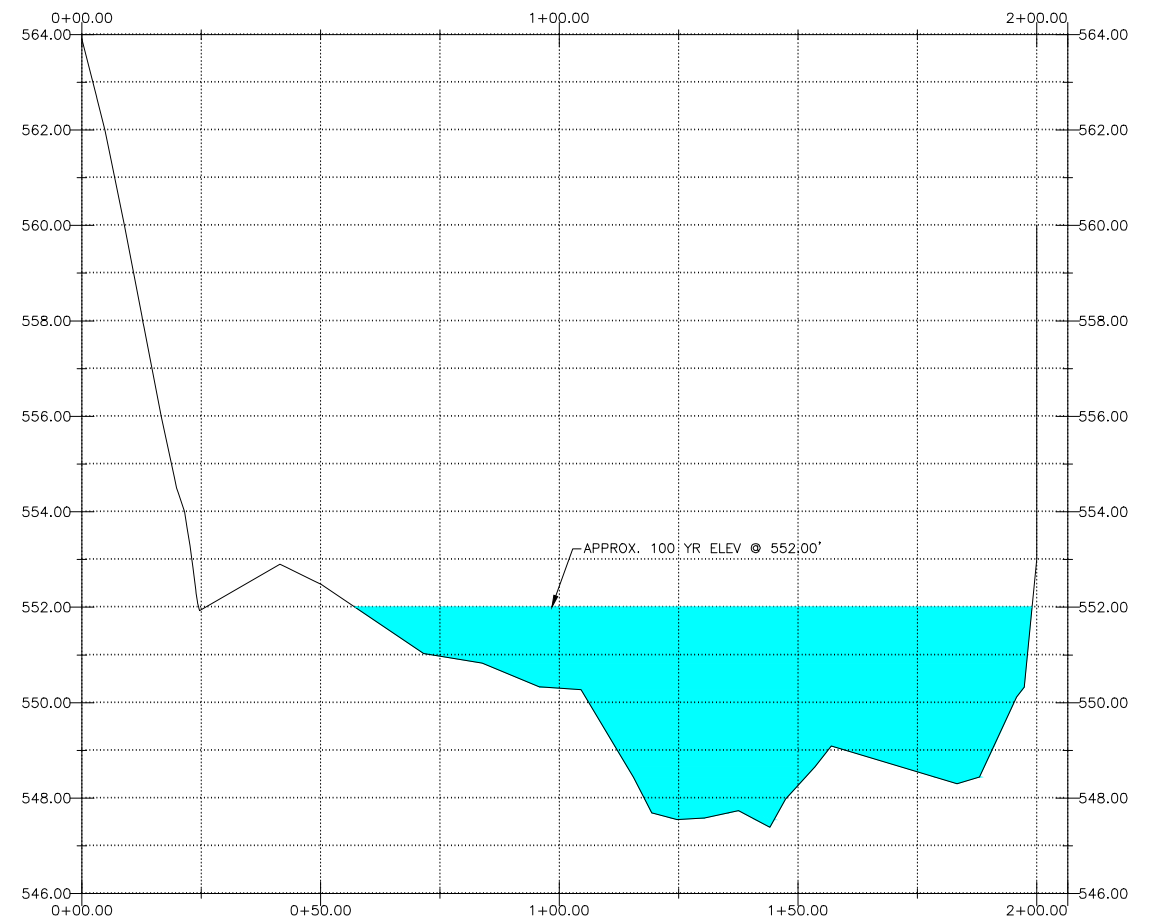


NOTE:
 100 YR FLOODPLAIN ELEVATIONS ARE APPROXIMATE AND WERE
 TAKEN FROM FEMA-NATIONAL FLOOD INSURANCE PROGRAM.

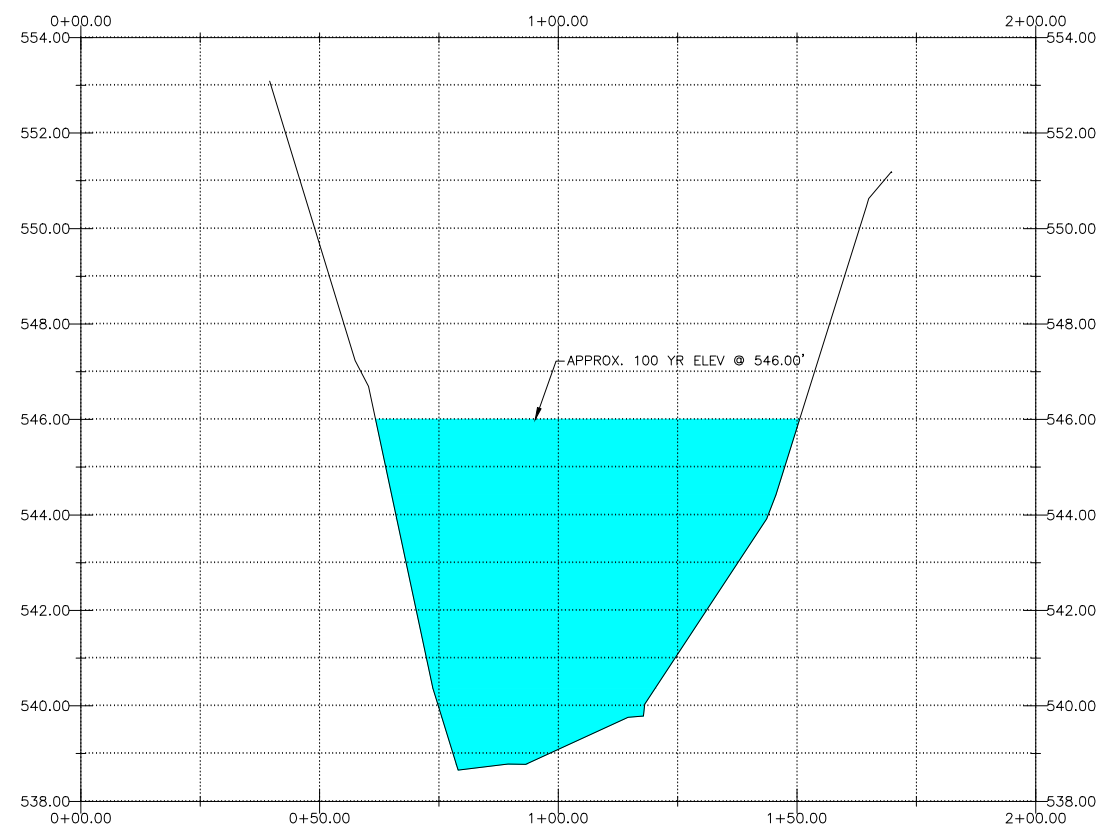
N:\Rollingwood\150435 Bridge PER and Hydraulic Analys\000\Drawings\Plans\Civil\Edgegrove Survey Exhibit.dwg
 Monday September 19, 2016, 2:40pm



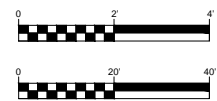
H SECTION H
 SCALE: HORIZ: 1"=40' VERT: 1"=4' (HALF SIZE SHEETS)



G SECTION G
 SCALE: HORIZ: 1"=40' VERT: 1"=4' (HALF SIZE SHEETS)

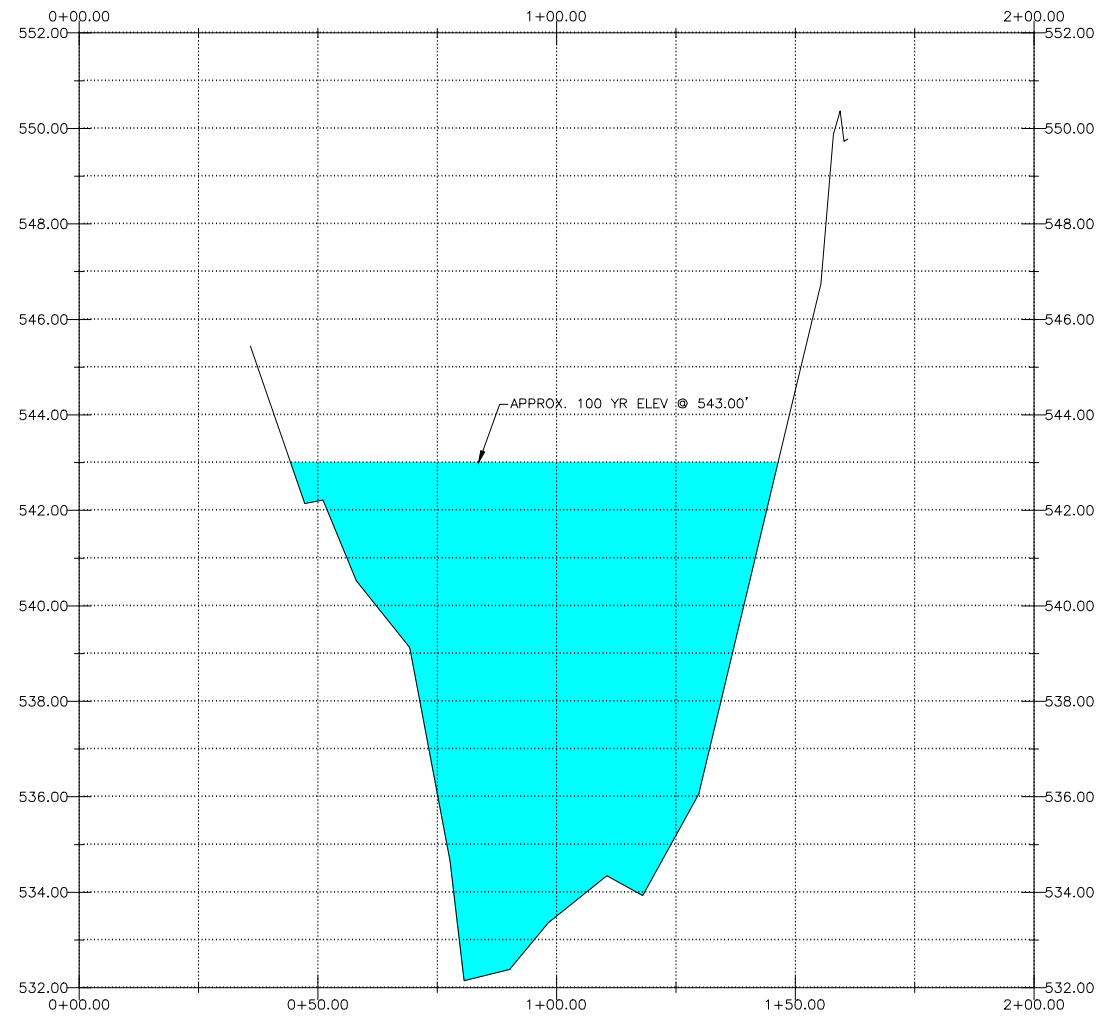


I SECTION I
 SCALE: HORIZ: 1"=40' VERT: 1"=4' (HALF SIZE SHEETS)

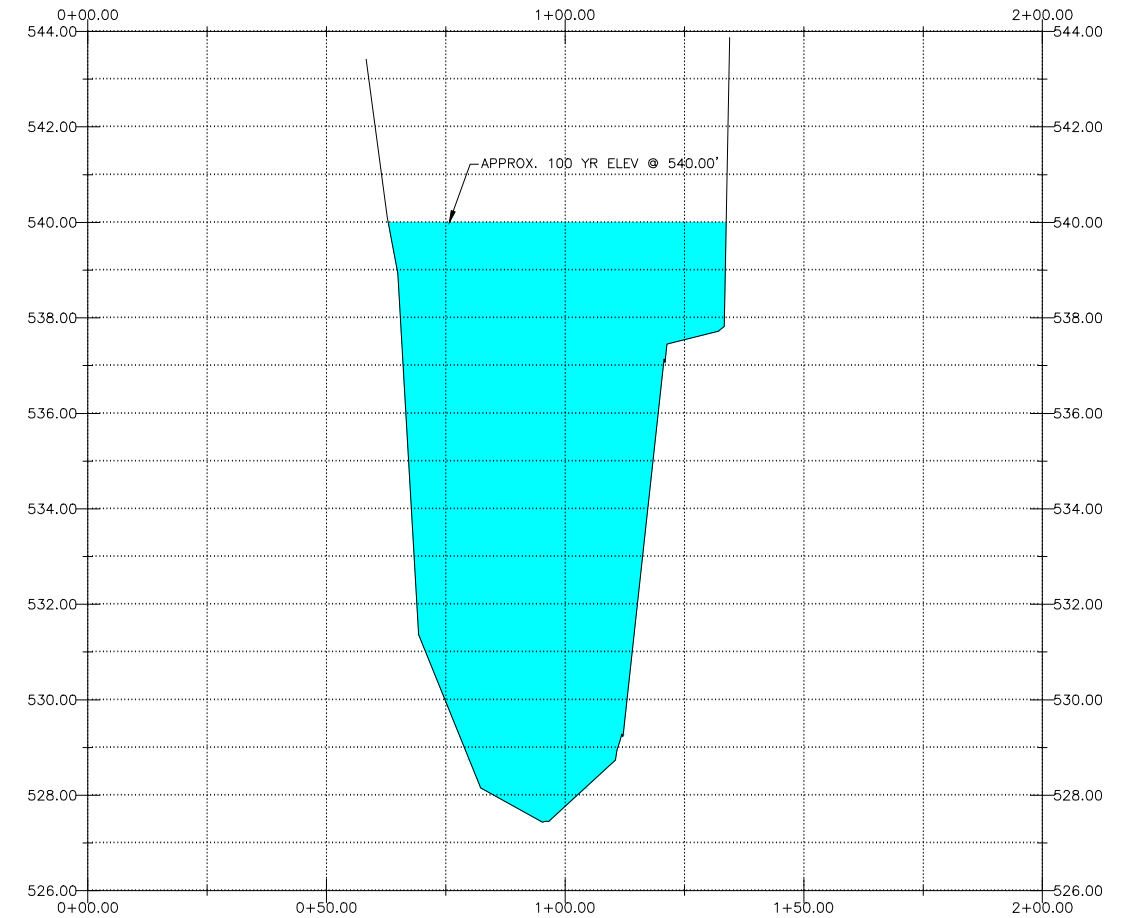


NOTE:
 100 YR FLOODPLAIN ELEVATIONS ARE APPROXIMATE AND WERE
 TAKEN FROM FEMA-NATIONAL FLOOD INSURANCE PROGRAM.

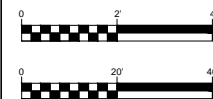
N:\Rollingwood\150435 Bridge PER and Hydraulic Analys\000 Drawings\Plans\Civil\Edgegrove Survey Exhibit.dwg
Monday September 19, 2016, 2:41pm



J SECTION J
SCALE: HORIZ: 1"=40' VERT: 1"=4' (HALF SIZE SHEETS)

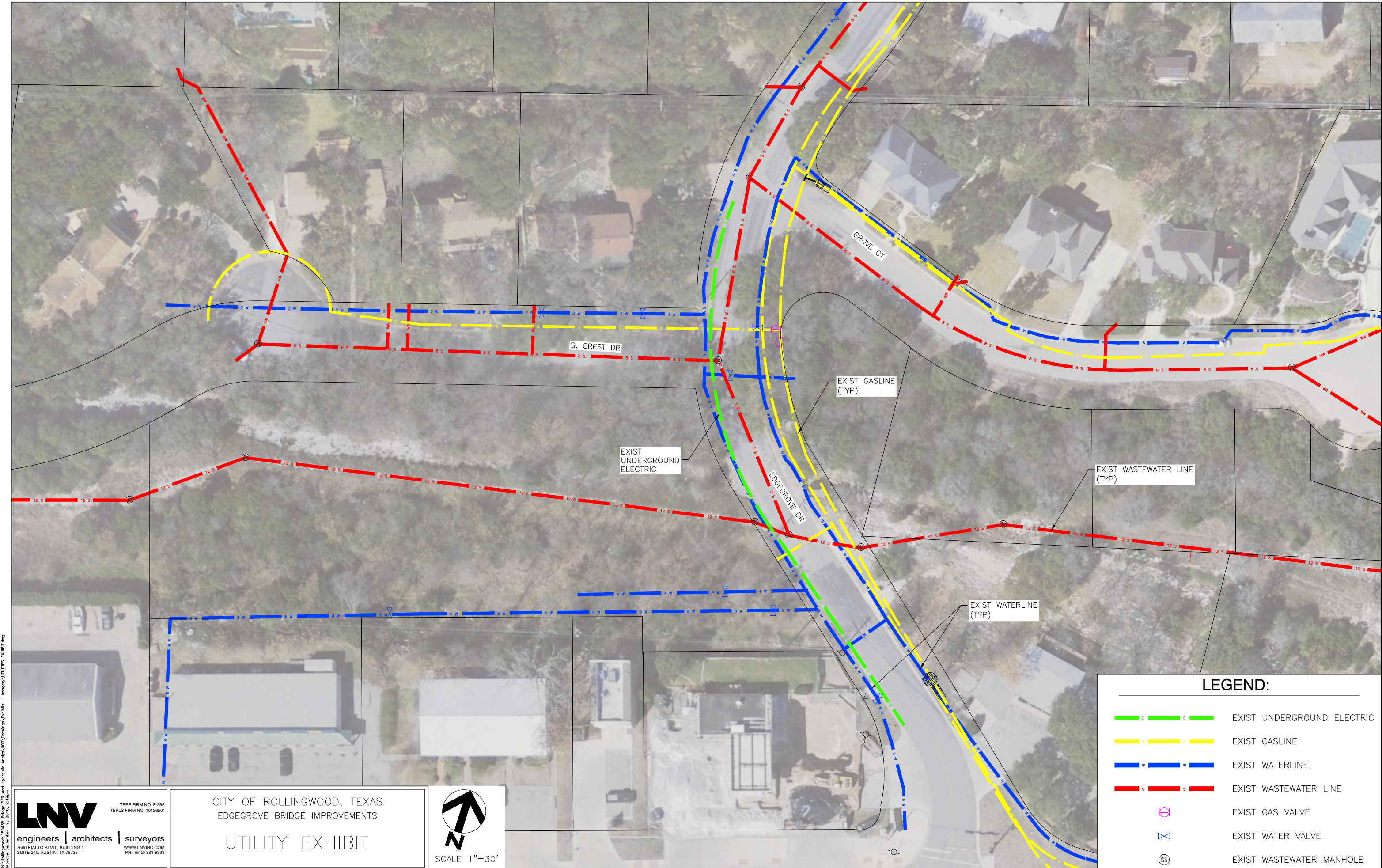


K SECTION K
SCALE: HORIZ: 1"=40' VERT: 1"=4' (HALF SIZE SHEETS)



NOTE:

100 YR FLOODPLAIN ELEVATIONS ARE APPROXIMATE AND WERE
TAKEN FROM FEMA-NATIONAL FLOOD INSURANCE PROGRAM.



N:\Submittals\151515 - Ridge Hill and Hydraulic Analysis\000\Drawings\Utilities Exhibit.dwg
 Monday, September 13, 2016, 2:48pm

LNV
 engineers | architects | surveyors
 7500 RIALTO BLVD., BUILDING 1
 SUITE 240, AUSTIN, TX 78735
 WWW.LNVINC.COM
 PH. (512) 381-8333

CITY OF ROLLINGWOOD, TEXAS
 EDGEGROVE BRIDGE IMPROVEMENTS

UTILITY EXHIBIT



SCALE 1"=30'

LEGEND:

- E — E — E — EXIST UNDERGROUND ELECTRIC
- G — G — G — EXIST GASLINE
- W — W — W — EXIST WATERLINE
- S — S — S — EXIST WASTEWATER LINE
- ⊖ EXIST GAS VALVE
- △ EXIST WATER VALVE
- ⊙ SS EXIST WASTEWATER MANHOLE